



Leica System 1200 Pairing Guide

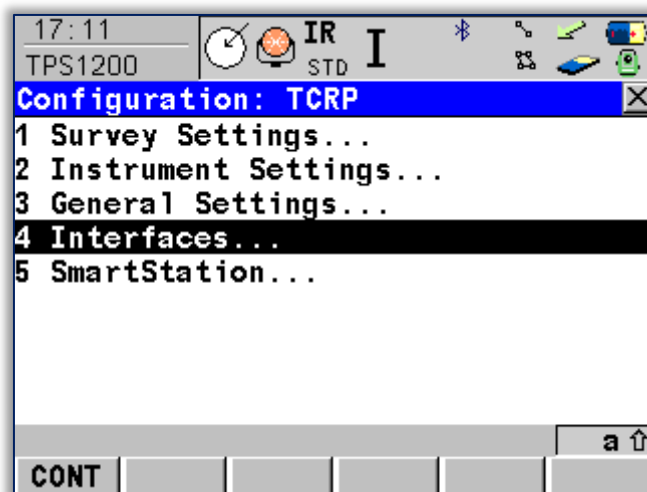
(Bluetooth)

Following the steps below should ensure communication with all System 1200 Total Stations

1. From the main menu select **Option 5: Configuration**

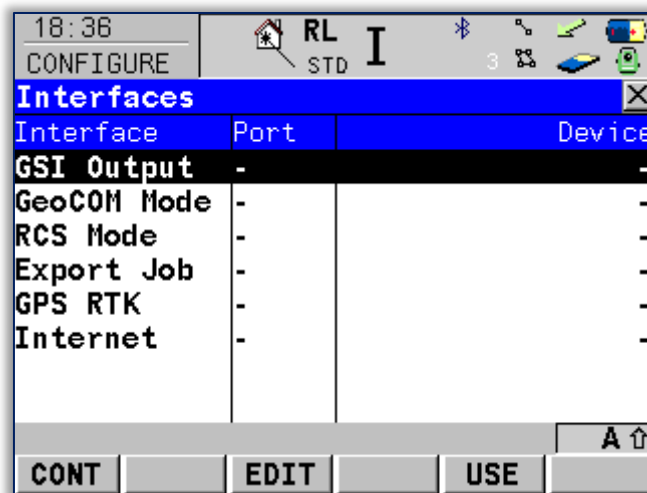


2. And then **Option 4: Interfaces**

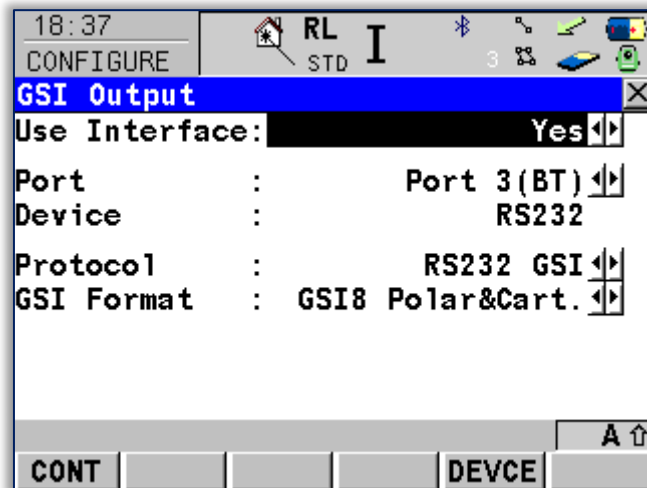




- Both the **GSI Output** and the **GeoCOM** mode need to be activated, so that their ports read 3, to do this: highlight **GSI Output** and select **EDIT**.

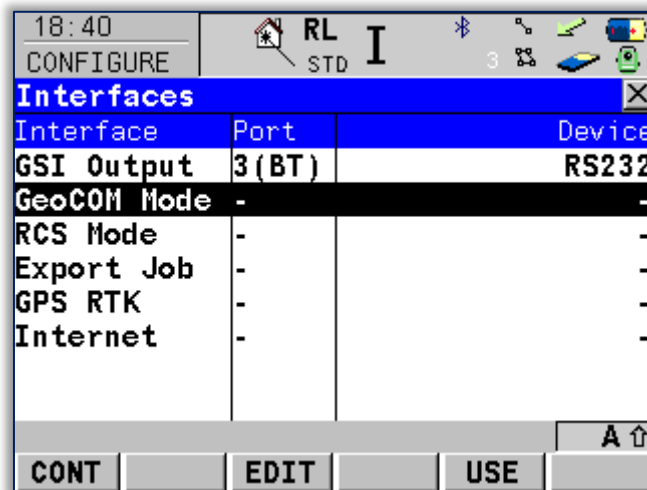


- Make any amendments necessary so that your settings match the image below. Once you're finished, select **CONT**. This will take you back to the page before.

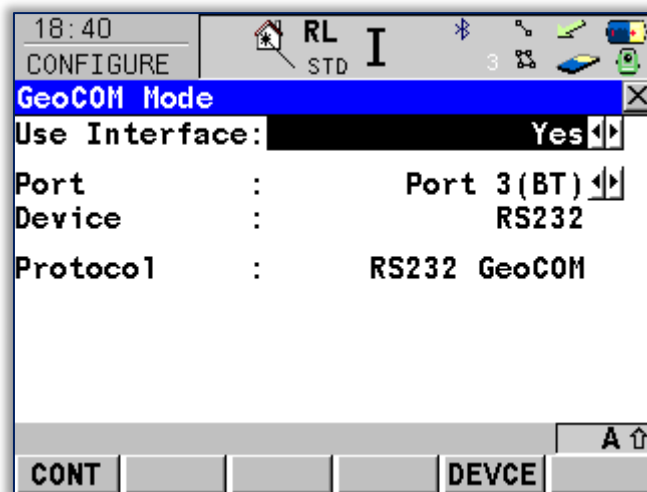




5. Now highlight the **GeoCOM Mode**, and again select **EDIT**.



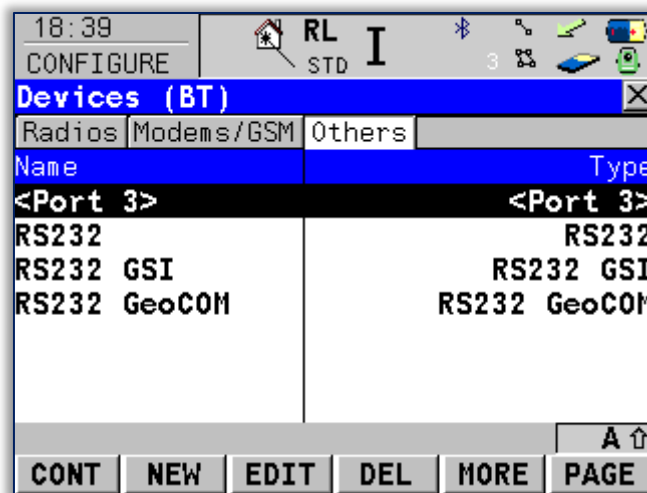
6. Make any amendments necessary so that your settings match the image below.



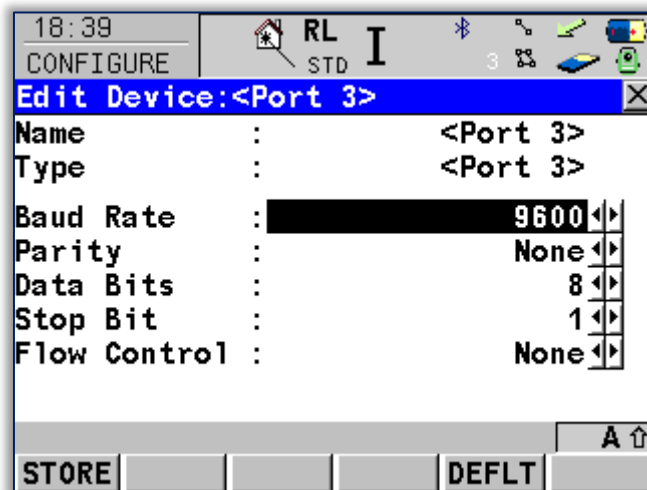
7. Once you're finished, select **DEVCE**.



8. For each of the Ports shown (<Port 3> - RS232 – RS232 GSI – RS232 GeoCOM), highlight each in turn starting with <PORT 3>, and select **EDIT**.

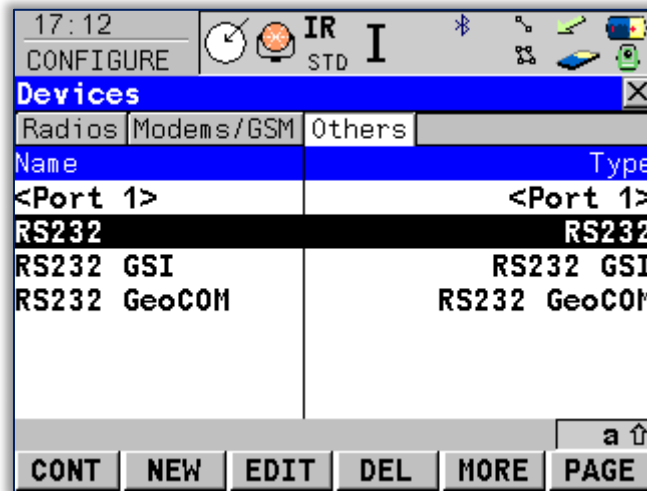


9. Amend all the settings so that they match the below image, once complete select **STORE**. This will return you back a page.

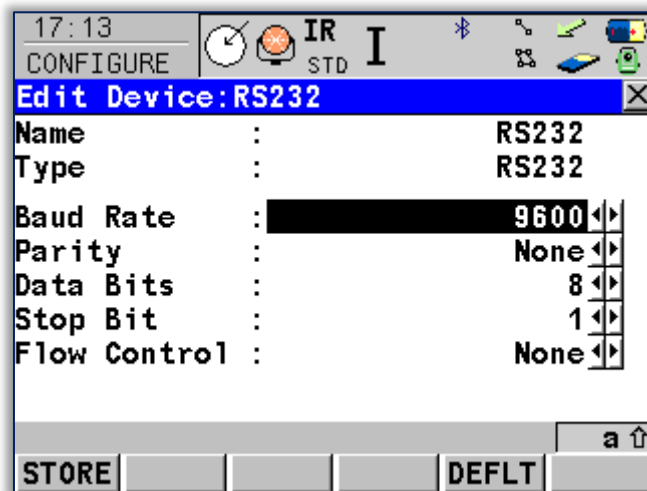




10. Next highlight **RS232**, and again select **EDIT**.

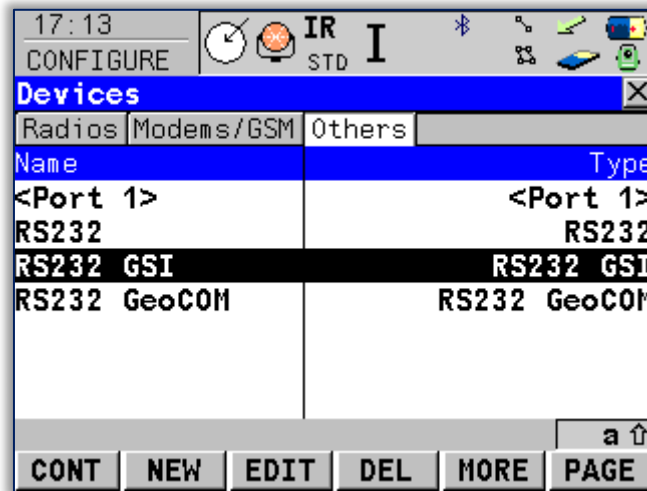


11. Amend all the settings so that they match the below image, once complete select **STORE**. This will return you back a page.

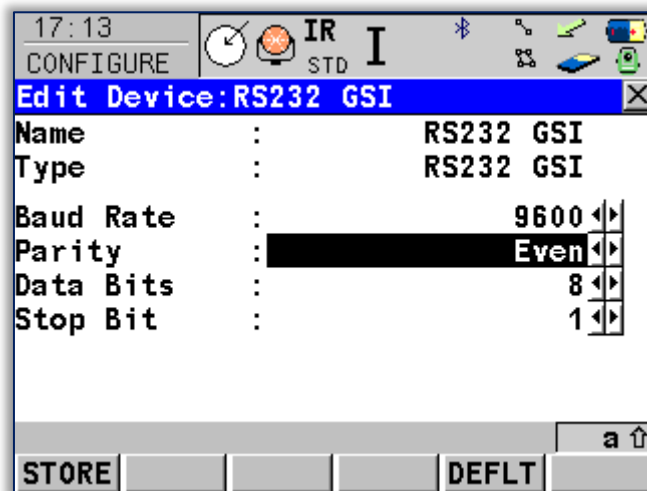




12. Next highlight **RS232 GSI**, and again select **EDIT**.

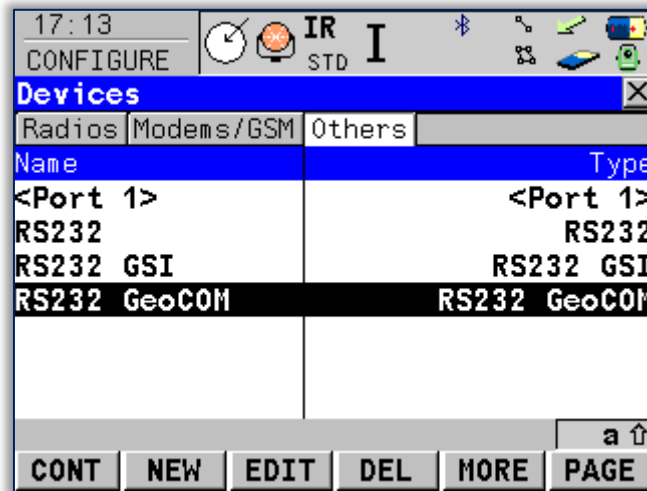


13. Amend all the settings so that they match the below image, once complete select **STORE**. This will return you back a page.

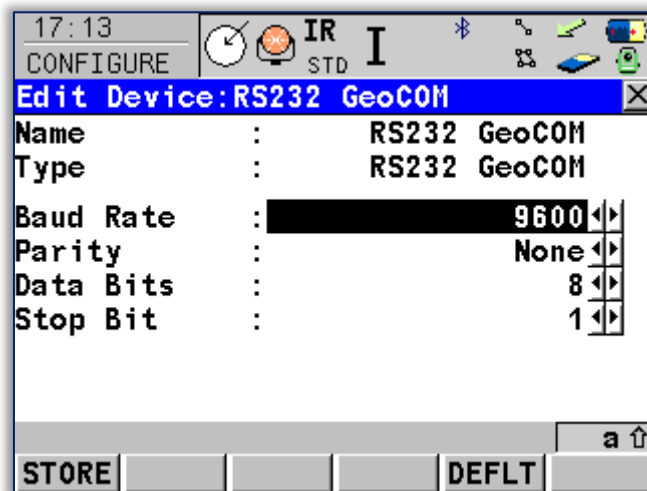




14. Finally highlight **RS232 GeoCOM**, and again select **EDIT**.

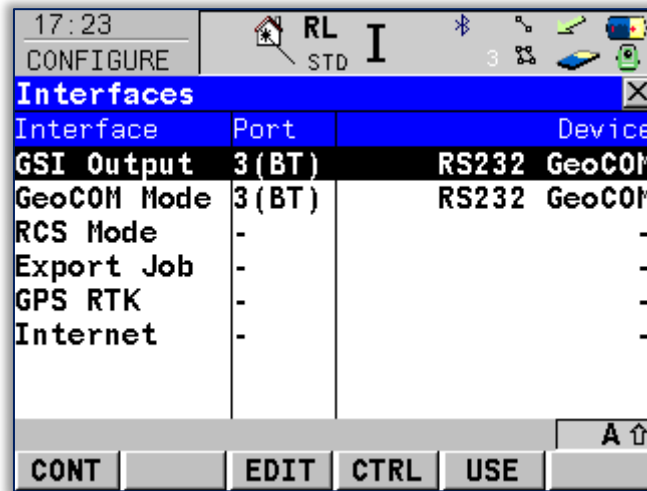


15. Amend all the settings so that they match the below image, once complete select **STORE**. This will return you back a page.

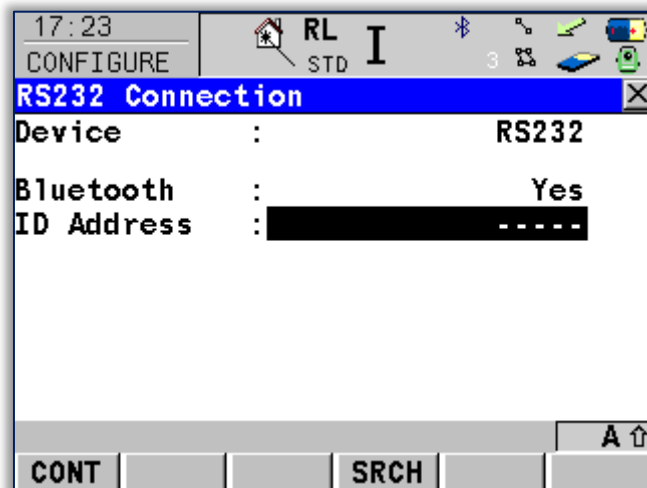




16. All the settings should now be complete, selecting **CONT**, will exit you back out to the main menu once again, now the Bluetooth is 'Active' was can now search for the PC that we wish to connect to. In the menu shown below you should now have a **CTRL** option activated, select this.



17. By selecting **SRCH** the Total Station will now search for your PC (provided you have the Bluetooth activated on your PC).



NB: One final thing to remember is to make sure that your reflector type is set correctly to which surface that you are measuring to.