



## Leica System 1200 Pairing Guide

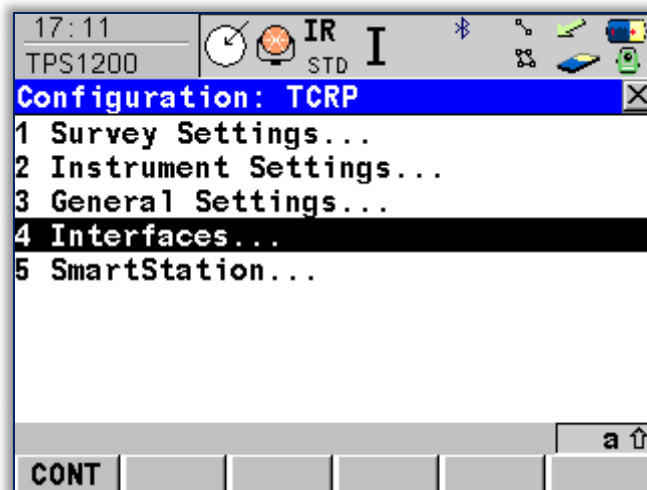
(Cable)

Following the steps below should ensure communication with all System 1200 Total Stations

1. From the main menu select **Option 5: Configuration**

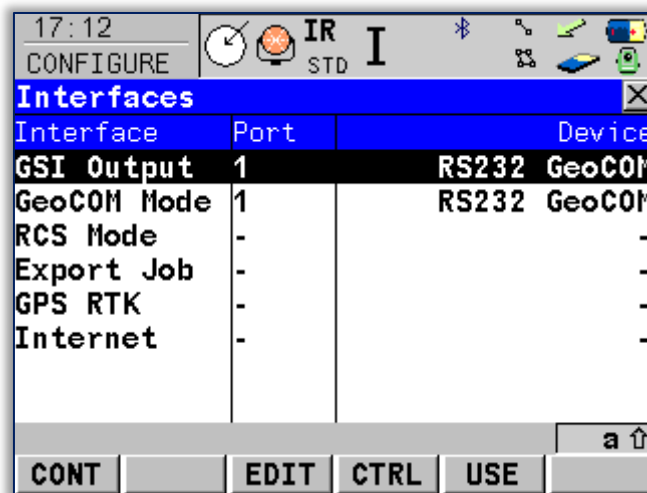


2. And then **Option 4: Interfaces**

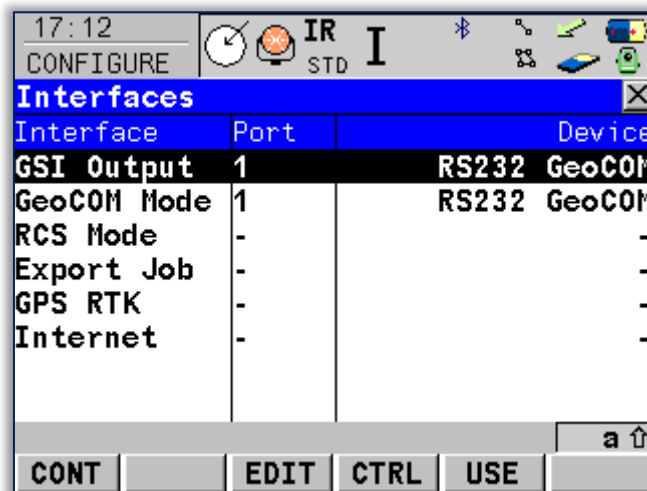




- Both the **GSI Output** and the **GeoCOM** mode need to be activated, so that their ports read 1, as in the image below.

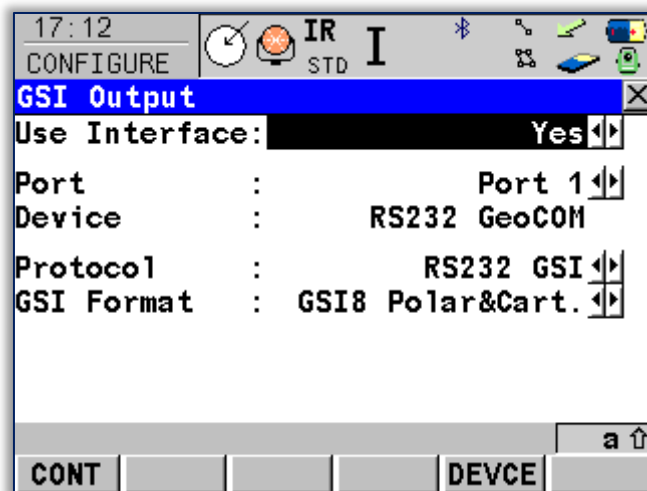


- With **GSI Output** highlighted, select **EDIT**.

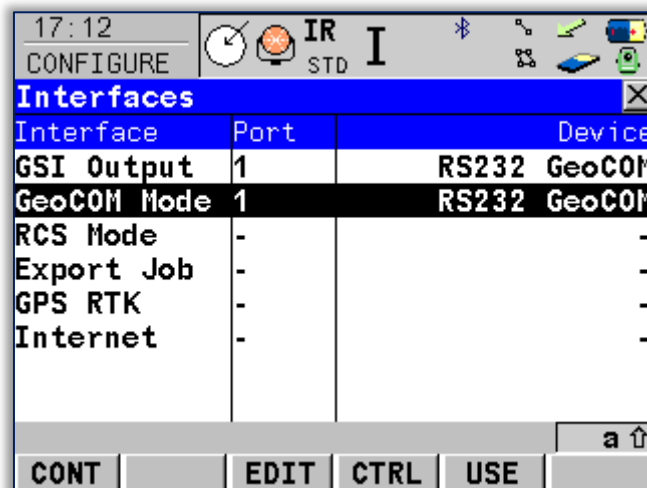




5. Make any amendments necessary so that your settings match the image below. Once you're finished, select **CONT**. This will take you back to the page before.

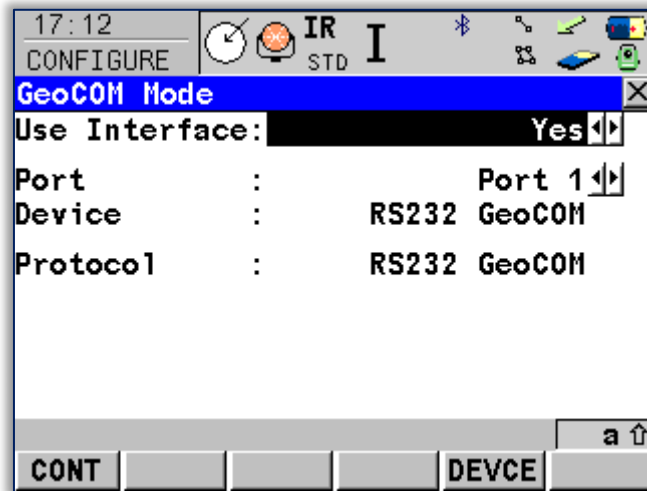


6. Now highlight the **GeoCOM Mode**, and again select **EDIT**.



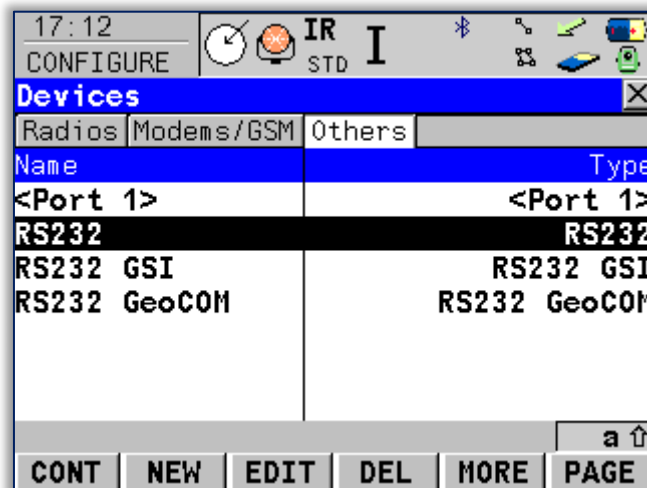


7. Make any amendments necessary so that your settings match the image below.



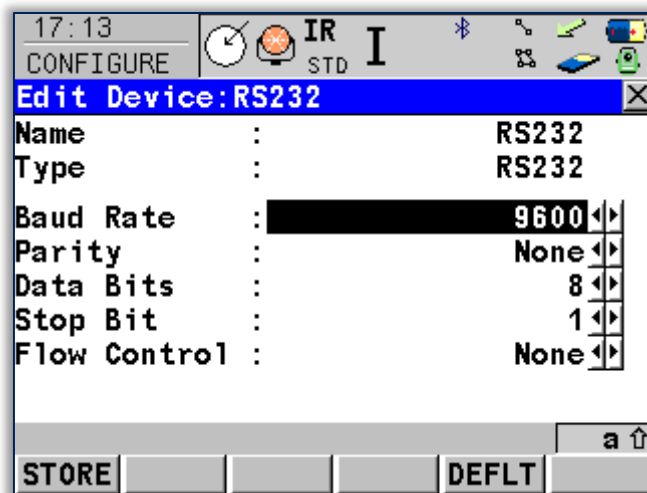
8. Once you're finished, select **DEVICE**.

9. For each of the Ports shown (RS232 – RS232 GSI – RS232 GeoCOM), highlight each in turn starting with **RS232**, and select **EDIT**.

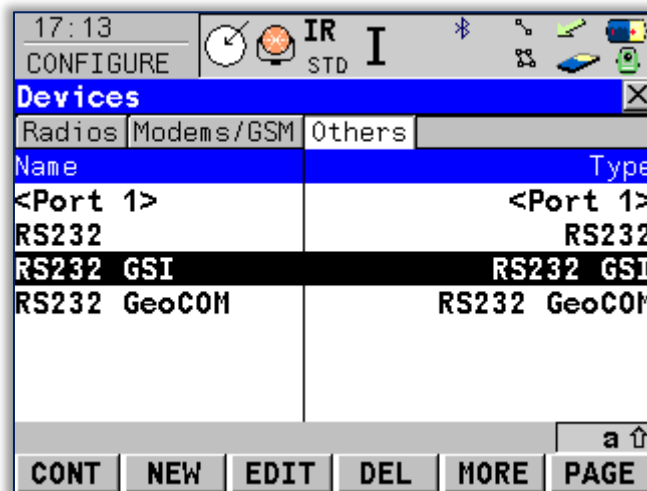




10. Amend all the settings so that they match the below image, once complete select **STORE**. This will return you back a page.

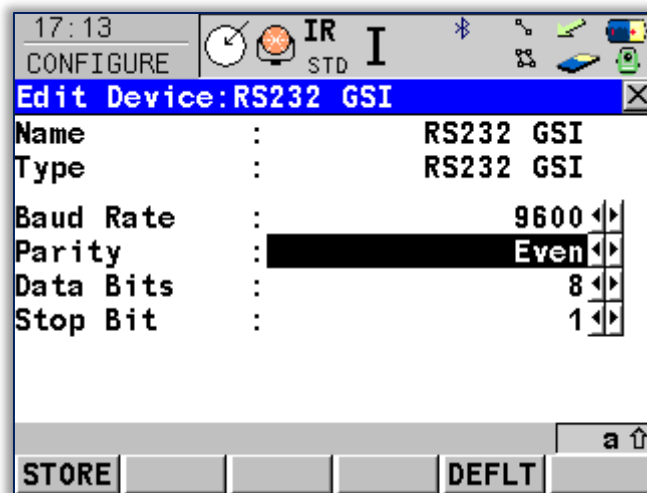


11. Next highlight **RS232 GSI**, and again select **EDIT**.

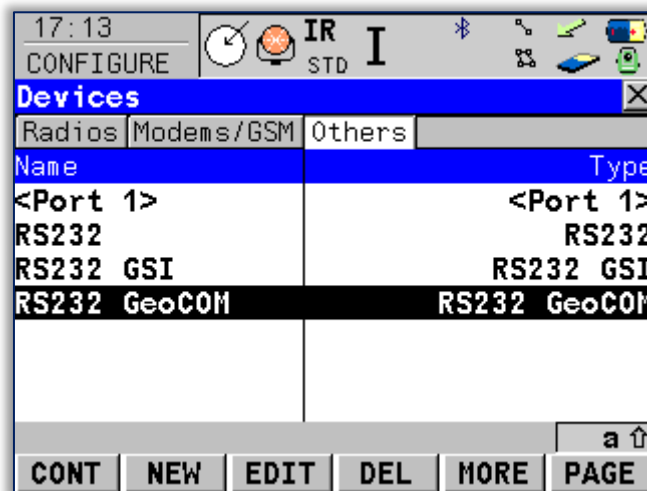




12. Amend all the settings so that they match the below image, once complete select **STORE**. This will return you back a page.

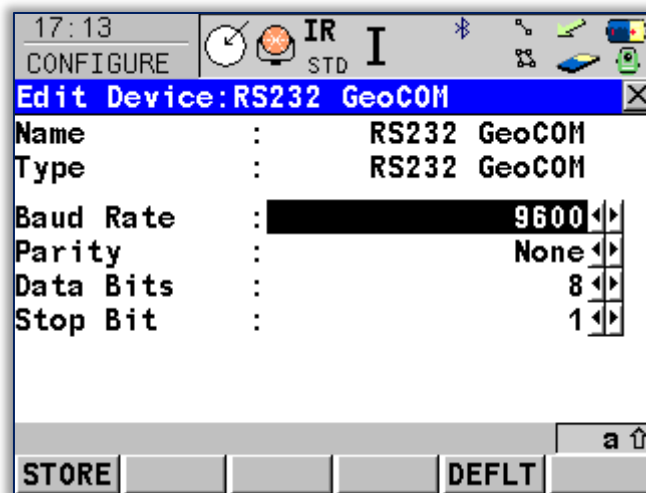


13. Finally highlight **RS232 GeoCOM**, and again select **EDIT**.





14. Amend all the settings so that they match the below image, once complete select **STORE**. This will return you back a page.



15. All the settings should now be complete, selecting **CONT**, will exit you back out to the main menu once again.

NB: One final thing to remember is to make sure that your reflector type is set correctly to which surface that you are measuring to.