

Connecting Trimble Instruments to MBS

1. For connecting to Trimble instrument, your PC/tablet needs a valid license and the Trimble SDK to be installed.
2. Download and run the License App Setup file from [this link](#). By the end of installation a sample application will run which can be used to obtain the machine GUID needed for the license. Click on licensing tab and Get GUID button (figure 1). Email the number to info@surveymbs.com and in a day or two a perpetual free license will be issued for the requested device. Once the license is ready click on License Online to download it.

The application can be found on: C:\Program Files\MBS Software\MBS TrimbleLicense\
Trimble.Csi.Sample.exe

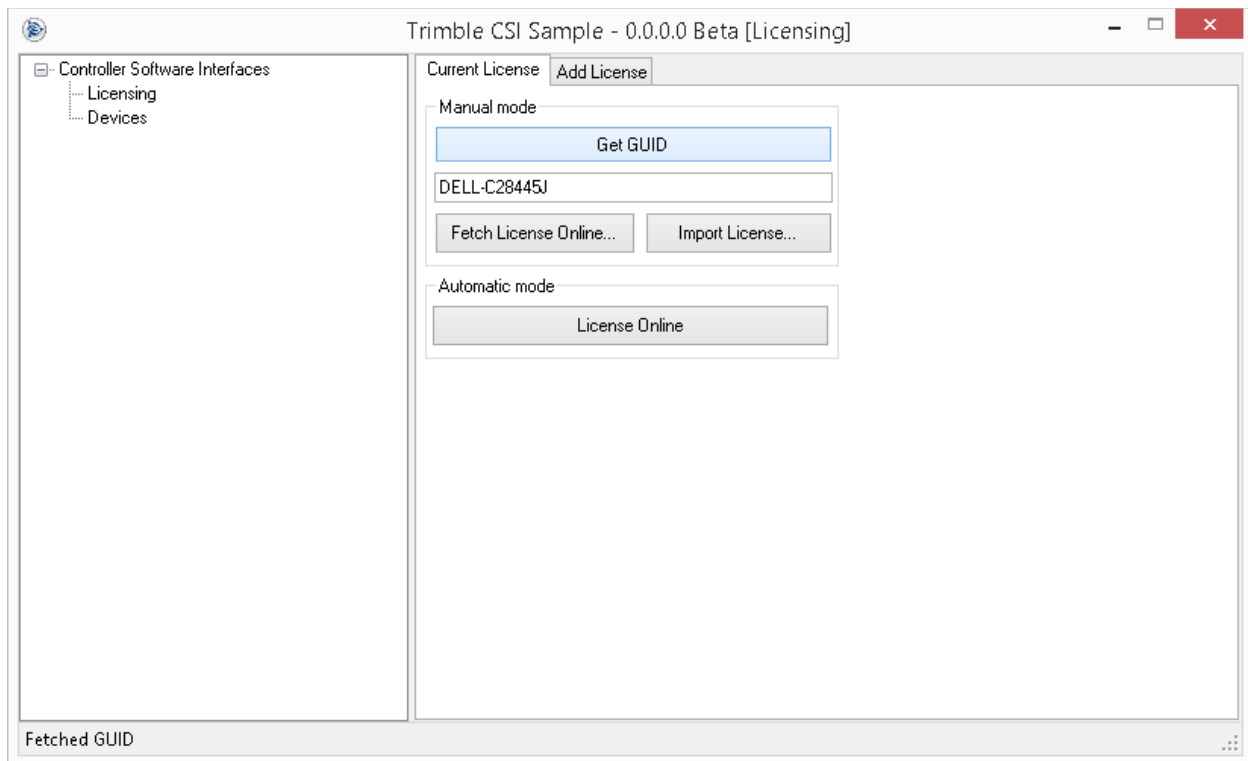


Figure 1

3. Install MBS and run MBS Floor Plans PC shortcut icon from desktop. On the Device tab click on Total Station Communications (figure 2) pick Trimble S Series from the list (figure 3) and click OK.

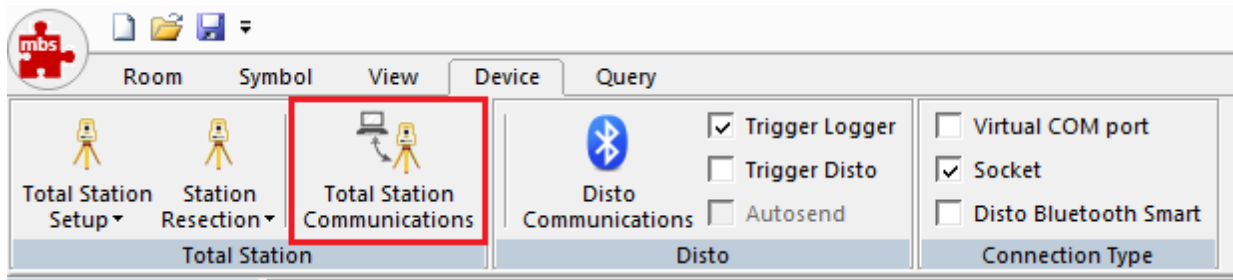


Figure 2

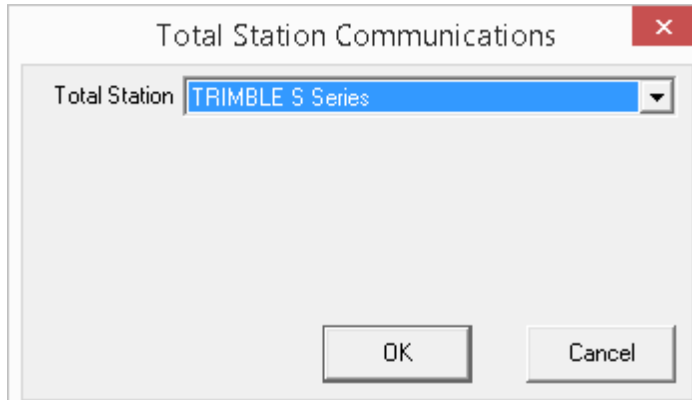


Figure 3

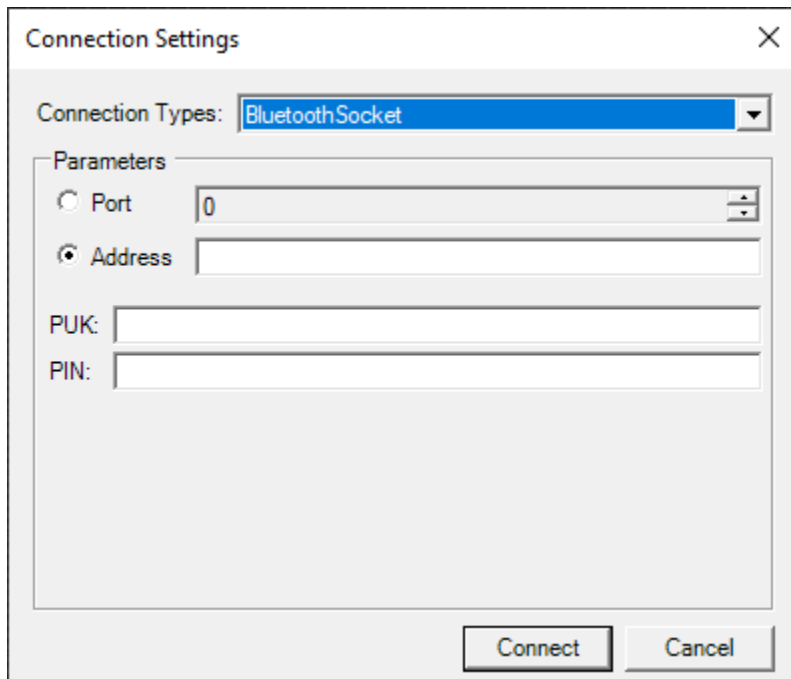


Figure 4

4. on the next dialog (figure 4) pick the connection type from the list. At the moment only USB and Bluetooth Socket are supported.

- USB connection: leave both SN & PIN parameters empty.
- Bluetooth Socket connection: type in the device Bluetooth Address in Address box in Figure5.

To find the Trimble Instrument Bluetooth Address: Open the Windows Device Manager > open the Properties dialogue of the device and look for Bluetooth device address in Figure5.

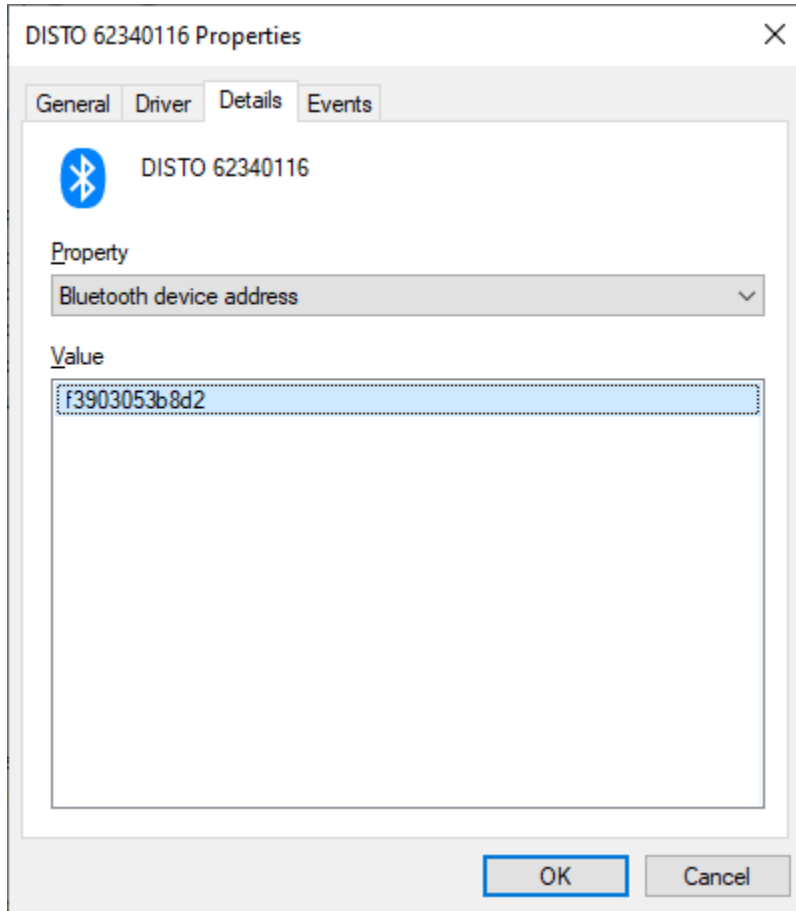


Figure 5

Click Connect. The status will show “Connecting to instrument...Please wait” message. Wait till it changes to “Connected”.

5. Once connected an additional Setting button will appear on the Device tab. The Trimble Settings dialog (figure 6) can be used to set the instrument Target type, Prism offset and turning on the Laser Point.

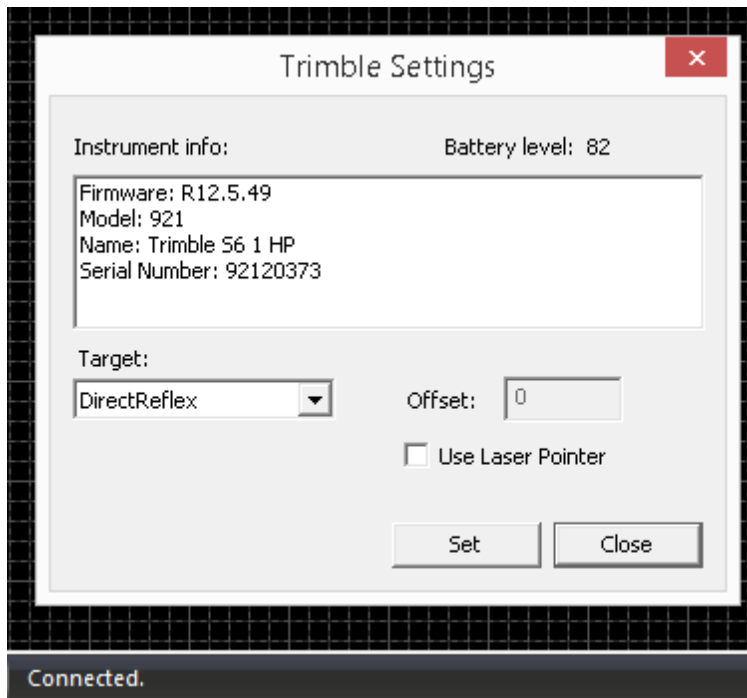


Figure 6